

**Stockinbingal  
Railway  
Photographs**

# Derailments

**Derailment near Baloura**  
**Date unknown**







**Derailment near Stockinbingal.  
Date unknown.**



**Derailment near Stockinbingal.  
Date unknown.**





# 4 Locos hauling a long wheat train.



# 4 Locos hauling a long wheat train.



# National Rail hauling a long container goods train.



**National Rail loco hauling container goods over the new concrete bridge, Bland Creek.**

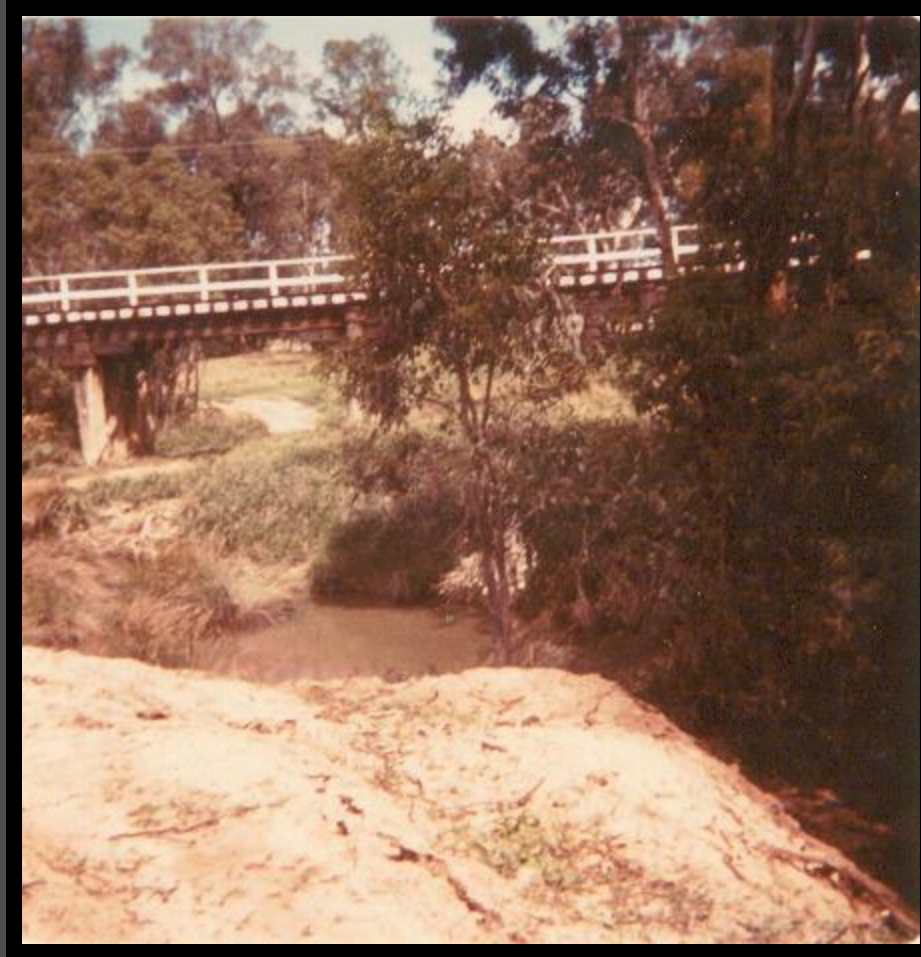


**A sign of the times and future, long container trains.**



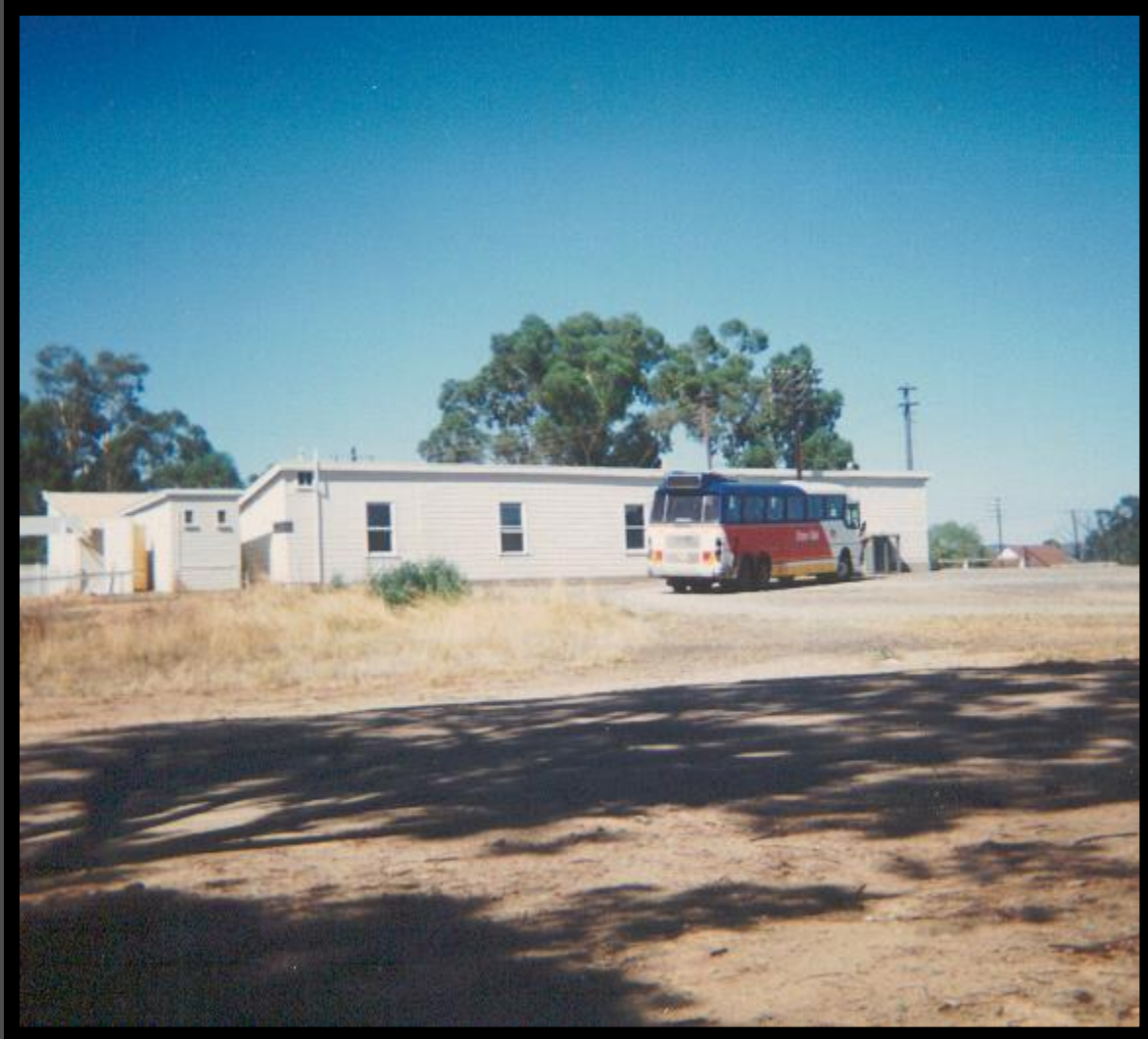
## **Old railway bridge.**

**This was replaced in the mid 1990s with a concrete ballast topped bridge.**



## **Rail coach, late 1980s.**

**The rail coaches replaced the old Rail Motors and are now run by contractors.**



**Stockinbingal rail yard, 1912.  
Wheat stacks ready for transporting.**





## The Santa Train, late 1980s.

The Santa Train traveled around the state stopping at small and not so small communities spreading Christmas cheer.



# The Santa Train, late 1980s.

The Santa Train traveled around the state stopping at small and not so small communities spreading Christmas cheer.



**Steam Locomotive 3026.  
Leaving Stockinbingal Station, year unknown.**



**Steam Locomotive 3026.  
Crossing Dudauman Road, year unknown.**



## **Steam Locomotive 3801.**

**The legendary 3801 arriving at Stockinbingal on one of its tourist trips around the state, date unknown.**



**Steam locomotive 3801.  
Leaving the platform at Stockinbingal under full  
steam.**



**Steam Locomotive 3801.  
The all important tenders being hauled by 3801.**



**Steam Locomotive 3801.  
Passenger carriages and tender behind 3801.**





**Steam train on a tourist run. 12 April 1993.**



**Steam train on a tourist run. 12 April 1993.**



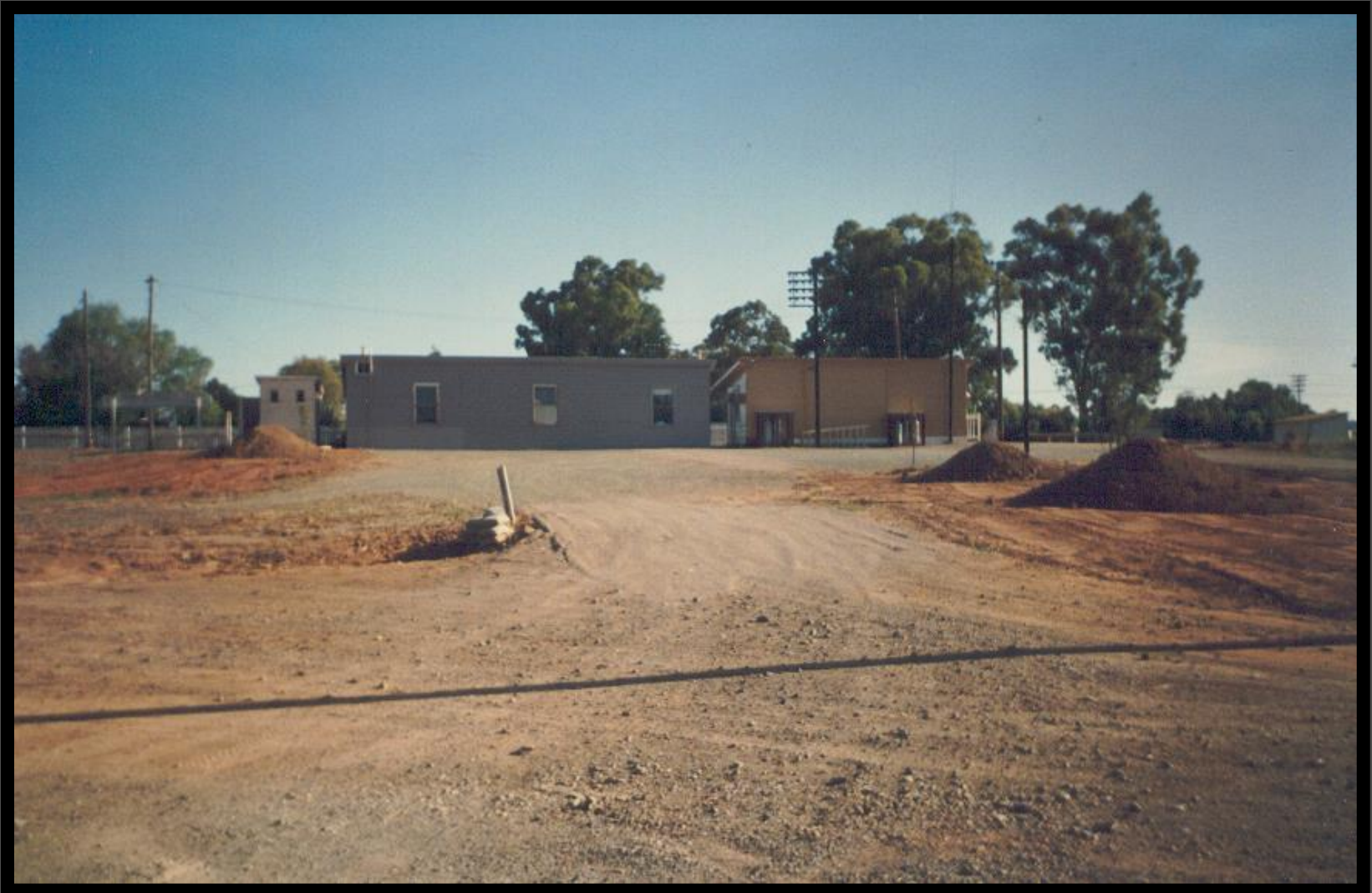
**Steam train on a tourist run. 12 April 1993.**



**Stockinbingal Railway Station.  
No 2 platform still standing, date unknown.**



**Stockinbingal Railway Station.  
Earthworks and painting under way, date unknown.**



# Stockinbingal Platform No1.



# Stockinbingal Platform No 2. Demolished mid 1990s.



# **Stockinbingal Railway Station.**

**No 1 platform recently painted, mid to late 1990s.**





**A Visit by the Great White Train  
1926**

**The train was a mobile showroom for all Australian made products such as washing machines, stoves, etc.**

**The train traveled with sales representatives from the companies and orders could be taken for purchases. The train traveled around country NSW for several months.**

# The Great White Train.



**The Great White Train.  
Stockinbingal school children line up to see through  
the train.**



# **The Great White Train.**

**The Great White Train passing over the Bland Creek Bridge as it moves on its way across the State.**



**Visit by the Governor of NSW,  
His Excellency Rear Admiral  
Peter Ross Sinclair, AO,  
1991.**

**His visit included Stockinbingal Primary School  
and the rural fire brigade.**

**The Governors' Rolls Royce.  
It traveled by road.**



**Station Master Roy Gatto standing by the  
Governors' Carriage.**





# 48 Class locos hauling the Governor's train.



# The Governors procession heading to the school.



# The Governor on the platform with police and other officials.

